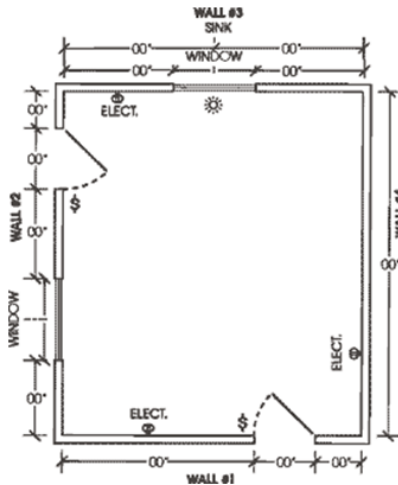


Measurements

For the Kitchen:

Bring in the following measurements so together we can layout your new kitchen.



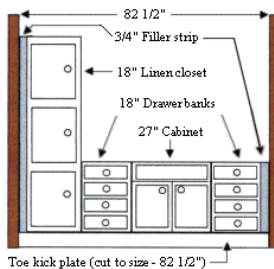
1. Start by drawing each wall of the kitchen, and record the total length of each wall from corner to corner or corner to edge of door way.
2. Insert the width measurement for any windows and the measurement from corner to the edge of the window.
3. Insert the measurement of the gas line and vent pipe for the stove, measure from the center of pipe to corner.
4. Note any electrical plugs that may interfere with the new cabinets.

Page 1 of 3

Measurements

5. Measure ceiling heights, this may include two measurements; the height where the wall cabinets are hung and the center of the kitchen where the lighting fixture is mounted.
6. Measure center line of the plumbing for the sink to the corner.
7. Note on drawing desired location of appliances in your kitchen.
8. Record the width, height, and depth of all your appliances (i.e. Refrigerator, dishwasher, stove, microwave unit, trash compactor, wine refrigerator, cook top, etc.)

For Bathroom Vanities:



The Builders Surplus Prep Checklist Bathroom planning and measuring guide:

1. Measure the length of the bathroom area where your vanity will be installed. If against a wall on the side, measure the depth of the side wall.
2. Measure the distance from the center line of the existing plumbing to the side wall.

Page 2 of 3

Measurements

3. Measure the height of the old vanity. Remember now you have choices of the standard 30" tall that is good with children reaching the sinks, and now the adult height at about 34 ½" high. So mark down the height and length from corner of light switches and plugs so we can determine your options when you arrive at our warehouse.

4. Measure Ceiling heights so as we plan for mirrors and linen cabinets, we will want to be sure we have the proper vertical clearances for placements.

For Entry Doors:

The Builders Surplus Prep Checklist Bathroom planning and measuring guide

If your door frame (door jamb) is in good condition and the current painted surface is acceptable, all you will need is the door and new hardware if you desire. Simply measure the width, height, and thickness of the door being replaced.

In cases where you will be replacing both the door and frame, we will need the rough opening measurement. This would be the measurement between the studs behind the old door frame. You may have to pull the interior casing moulding off to expose the frame and studs behind to have an accurate measurement. Measure the width and height of opening; this will be the maximum size your opening will accept without removal of your walls. The last measurement we need is the wall thickness. Take the measurement from; the surface of the drywall on the interior side across to the surface of the stucco or siding on the exterior side.