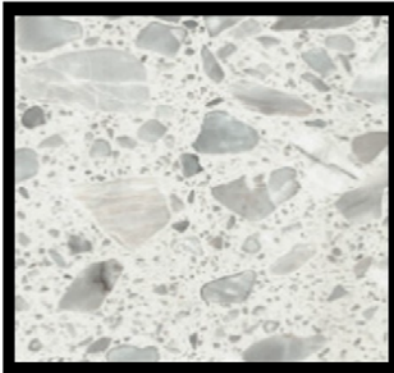


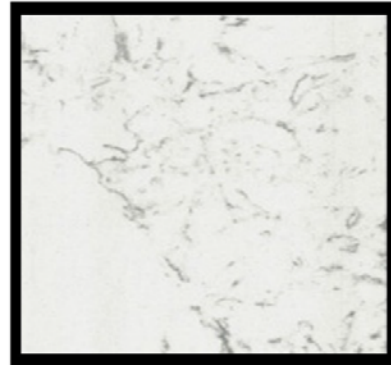
SPECIAL ORDER VANITY TOPS & SLABS

"CRUSHED MARBLE"

GROUP A / B



BIANCO

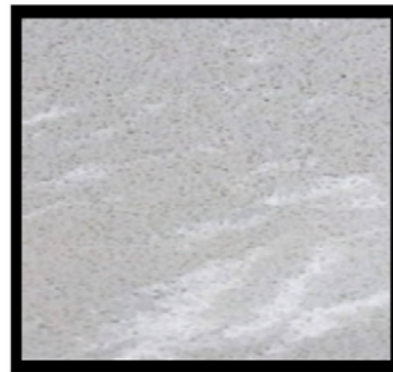


CARRERA

GROUP C / D

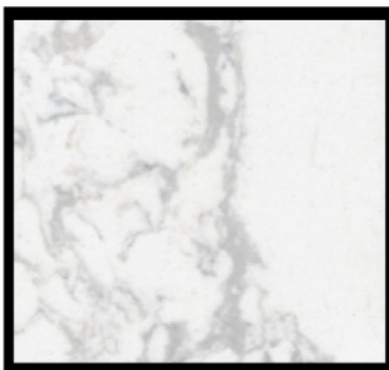


GLACIER WHITE

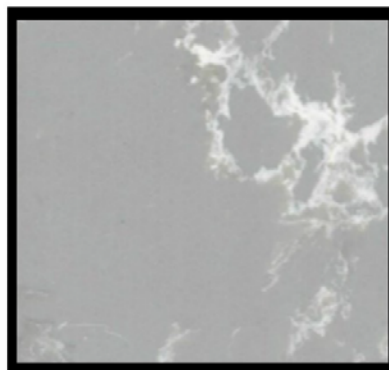


LUNA

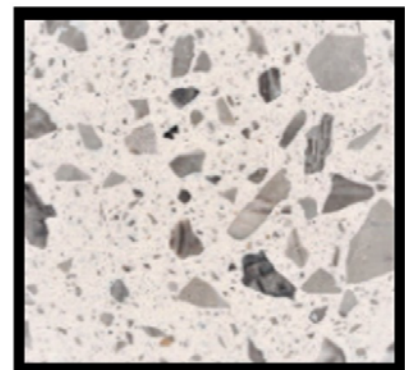
GROUP E / F



CALCUTTA BLANC



CALCUTTA GRIGIO



ALASKA

1800 E. Dyer Rd, Santa Ana CA 92708 | 888-296-9028 | Fax: 949-756-8290
Hours: Tuesday-Saturday 7:30am to 6:00pm, Closed Monday and Sunday
www.BuildersSurplus.Net | Email: info@BuildersSurplus.Net

QUARTZ OPTIONS ON BACKSIDE



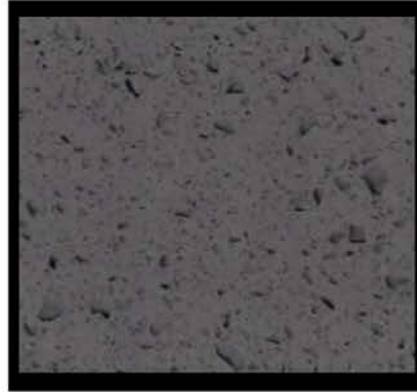
SPECIAL ORDER VANITY TOPS & SLABS

"QUARTZ"

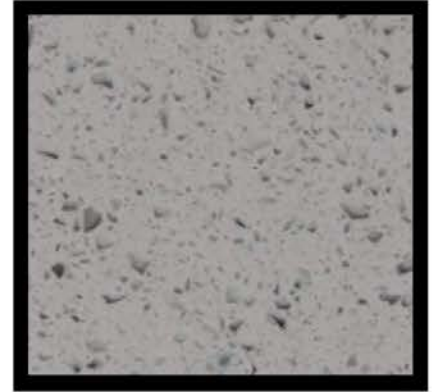
GROUP A / B



ICE WHITE



TITANIUM

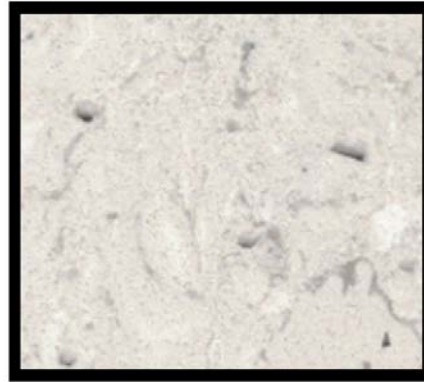


PLATINUM

GROUP C / D



ALPINE



SEVILLE

GROUP E / F



CALACATTA LAGUNA



CARRARA NAPA



CALACATTA CATALINA

SPECIAL ORDER VANITY TOPS & SLABS

"CRUSHED MARBLE" (4-5 WEEK LEAD TIME)

PRICE INCLUDES 1 BACK SPLASH & 2 SIDE SPLASHES. YOUR CHOICE OF: SQUARE, OVAL, SLAB, 22" DEEP, & BOWL PLACEMENT (OFFSET)

<i>PRICE GROUP A (5/8" Thick)</i>		<i>PRICE GROUP B (1 1/4" Thick)</i>		<i>PRICE GROUP C (5/8" Thick)</i>		<i>PRICE GROUP D (1 1/4" Thick)</i>					
* BIANCO	* CARRERA	* BIANCO	* CARRERA	* GLACIER WHITE	* LUNA	* GLACIER WHITE	* LUNA				
<i>PRICE GROUP E (5/8" Thick)</i>				<i>PRICE GROUP F (1 1/4" Thick)</i>							
* ALASKA		* CALCUTTA GRIGIO		* ALASKA		* CALCUTTA GRIGIO					
* CALCUTTA BLANC				* CALCUTTA BLANC							
	SINGLE BOWL										
	25" x 22"	31" x 22"	37" x 22"	43" x 22"	49" x 22"	55" x 22"	61" x 22" SGL	67" x 22" SGL	73" x 22" SGL	85" x 22" SGL	96" x 22" SGL
PRICE GROUP A	\$355.00	\$390.00	\$424.00	\$463.00	\$497.00	\$533.00	\$568.00	\$604.00	\$641.00	\$730.00	\$788.00
PRICE GROUP B	\$411.00	\$455.00	\$499.00	\$545.00	\$589.00	\$633.00	\$680.00	\$721.00	\$788.00	\$1,019.00	\$1,116.00
PRICE GROUP C	\$327.00	\$357.00	\$388.00	\$418.00	\$449.00	\$478.00	\$510.00	\$539.00	\$568.00	\$696.00	\$750.00
PRICE GROUP D	\$401.00	\$455.00	\$486.00	\$531.00	\$572.00	\$616.00	\$649.00	\$668.00	\$742.00	\$995.00	\$1,087.00
PRICE GROUP E	\$368.00	\$403.00	\$438.00	\$478.00	\$514.00	\$550.00	\$587.00	\$620.00	\$734.00	\$752.00	\$813.00
PRICE GROUP F	\$428.00	\$474.00	\$520.00	\$566.00	\$612.00	\$658.00	\$711.00	\$754.00	\$802.00	\$1,050.00	\$1,150.00

DOUBLE BOWL					
	61" x 22" DBL	67" x 22" DBL	73" x 22" DBL	85" x 22" DBL	96" x 22" DBL
PRICE GROUP A	\$717.00	\$803.00	\$790.00	\$878.00	\$936.00
PRICE GROUP B	\$809.00	\$853.00	\$920.00	\$1,152.00	\$1,248.00
PRICE GROUP C	\$658.00	\$688.00	\$717.00	\$847.00	\$901.00
PRICE GROUP D	\$813.00	\$860.00	\$899.00	\$1,154.00	\$1,246.00
PRICE GROUP E	\$742.00	\$779.00	\$817.00	\$909.00	\$970.00
PRICE GROUP F	\$841.00	\$909.00	\$953.00	\$1,203.00	\$1,303.00

"QUARTZ" (4-5 WEEK LEAD TIME)

PRICE INCLUDES 1 BACK SPLASH. YOUR CHOICE OF: SQUARE, OVAL, SLAB, 22" DEEP, & BOWL PLACEMENT (OFFSET). **FLAT/SQUARE EDGE ONLY**

PRICE GROUP A (3/4" Thick)		PRICE GROUP B (1 1/2" Thick)		PRICE GROUP C (3/4" Thick)		PRICE GROUP D (1 1/2" Thick)	
* ICE WHITE	* TITANIUM	* ICE WHITE	* TITANIUM	* ALPINE	* SEVILLE	* ALPINE	* SEVILLE
* PLATINUM		* PLATINUM					
side splash = \$30.00		side splash = \$30.00		side splash = \$34.00		side splash = \$34.00	
PRICE GROUP E (3/4" Thick)				PRICE GROUP F (1 1/2" Thick)			
* CALACATTA CATALINA				* CALACATTA CATALINA			
* CALACATTA LAGUNA		* CARRARA NAPA		* CALACATTA LAGUNA		* CARRARA NAPA	
side splash = \$39.00				side splash = \$39.00			

SINGLE BOWL

	25" x 22"	31" x 22"	37" x 22"	43" x 22"	49" x 22"	55" x 22"	61" x 22" SGL	67" x 22" SGL	73" x 22" SGL	79" x 22" SGL	85" x 22" SGL	91" x 22" SGL	96" x 22" SGL
A	\$470.00	\$469.00	\$531.00	\$591.00	\$665.00	\$713.00	\$777.00	\$838.00	\$898.00	\$960.00	\$1,020.00	\$1,126.00	\$1,143.00
B	\$503.00	\$577.00	\$651.00	\$719.00	\$797.00	\$871.00	\$1,012.00	\$1,018.00	\$1,092.00	\$1,166.00	\$1,238.00	\$1,342.00	\$1,385.00
C	\$453.00	\$527.00	\$598.00	\$669.00	\$743.00	\$814.00	\$887.00	\$959.00	\$1,032.00	\$1,105.00	\$1,188.00	\$1,282.00	\$1,318.00
D	\$558.00	\$645.00	\$732.00	\$817.00	\$905.00	\$990.00	\$1,079.00	\$1,165.00	\$1,252.00	\$1,347.00	\$1,433.00	\$1,490.00	\$1,604.00
E	\$578.00	\$675.00	\$775.00	\$880.00	\$976.00	\$1,075.00	\$1,173.00	\$1,276.00	\$1,376.00	\$1,475.00	\$1,575.00	\$1,694.00	\$1,772.00
F	\$704.00	\$821.00	\$935.00	\$1,052.00	\$1,168.00	\$1,283.00	\$1,401.00	\$1,518.00	\$1,693.00	\$1,747.00	\$1,865.00	\$1,984.00	\$2,095.00

DOUBLE BOWL

	61" x 22" DBL	67" x 22" DBL	73" x 22" DBL	79" x 22" DBL	85" x 22" DBL	91" x 22" DBL	96" x 22" DBL
A	\$910.00	\$970.00	\$1,008.00	\$1,092.00	\$1,151.00	\$1,258.00	\$1,275.00
B	\$1,144.00	\$1,150.00	\$1,138.00	\$1,298.00	\$1,370.00	\$1,474.00	\$1,517.00
C	\$1,019.00	\$1,091.00	\$1,164.00	\$1,237.00	\$1,321.00	\$1,414.00	\$1,450.00
D	\$1,212.00	\$1,297.00	\$1,384.00	\$1,480.00	\$1,565.00	\$1,622.00	\$1,736.00
E	\$1,321.00	\$1,424.00	\$1,524.00	\$1,621.00	\$1,723.00	\$1,842.00	\$1,921.00
F	\$1,550.00	\$1,666.00	\$1,779.00	\$1,895.00	\$2,014.00	\$2,132.00	\$2,243.00

Builders Surplus Inc. 1800 E. Dyer Rd. Santa Ana Ca. 92705, 855-536-3270 Fax 949-756-8290

Hours: Tuesday-Saturday 7:30a to 6:00p, Closed: Monday and Sunday

www.BuildersSurplus.net Email: info@buildersSurplus.net

9/17/2024

Product Availability and Prices Subject to Change Without Notice